



FALVENT

PRODUCT OVERVIEW

ABOUT US



WELCOME TO FALVENT INDUSTRIAL COMPANY

FALVENT Industrial Company is a Saudi rising company focuses its business activity on the manufacture of industrial fans, ventilation systems and smoke exhaust fans, which integrates in development, manufacturing, installation, sales and after-sales services with its own factory and the strategic cooperation with main advantage manufactories, FALVENT has served and developed the professional ventilation solutions for their customers as well as offer highly efficient products that exceed future energy efficiency requirements.

AXIAL LONG CASE TUBE FAN (AXF)

- Efficient IEC standard motor, efficiency class IE3, frequency controllable
- Blades and hub are made of cast aluminum, dynamically balanced.
- Aerofoil impeller with adjustable pitch angel
- Long casing steel housing.
- Conveyor temperature up to 80 °C in continuous operation
- Suitable for outdoor installation
- Sizes from 315 mm up to 1600 mm diameter



Axial Wall Mount Fan



AWF

- Black painted axial impeller is made of aluminum alloy, dynamically balanced
- Powder coating Sheet steel square wall plate with production guard.
- External rotor motor, Degree of protection IP55, Insulation class F.
- Working temperature range from -15°C to +60°C.
- Standard airflow (A): motor over impeller.

Centrifugal Box Fan



MPT

- Max. medium temperature 80 °C
- With voltage or frequency controllable AC motors.
- Motor outside of airflow.
- Removable side walls for variable discharge direction.
- Double wall housing with thermal insulation.
- Backward curved centrifugal impeller.

Car parking Jet Fan



CFC

- Efficient IEC standard motor, single or two speed.
- Impeller made of aluminum alloy, dynamically balanced.
- Unidirectional or Reversible blade.
- Casing made of Carbon steel with epoxy paint protective coating.
- Silencers are placed on both sides of the fan casing
- Protection guard for inlet and deflector in the outlet.
- Mounting support included.

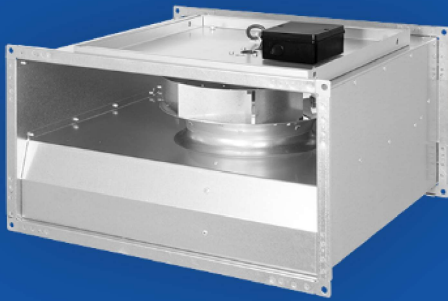
Car parking Jet Fan



CFP

- Efficient IEC standard motor, single or two speed.
- Galvanized sheet steel casing supplied with two mounting brackets.
- Centrifugal backward curved wheel in mild steel with polyester paint.
- Supplied with high carbon steel inlet guard.
- Compact design, especially suitable for car park with low head room
- Large volume flow rate, long throw distance, low sound level.
- Easy maintenance.

Centrifugal Rectangular Inline Fan



KER

- Housing made of galvanized steel with flanges on both sides.
- Backward curved centrifugal Impeller made of galvanized steel sheet.
- External Rotor Motor.
- Swing-out fan unit for cleaning and maintenance
- Conveyor temperature up to 70 °C in continuous operation.
- Mounting position horizontally and vertically.

Centrifugal Circular Inline Fan



KS

- High quality galvanized sheet housing
- Backward curved centrifugal impeller, dynamically balanced.
- Mounting bracket included.
- Working temperature +60°C.
- Installed in any position

Centrifugal Upblast Roof Fan



DVR

- Efficient IEC standard motor, efficiency class IE3, frequency controllable
- Housing made of weather-resistant aluminum.
- High-efficiency inlet venturi.
- Air is blown out of the top.
- Direct drive backward centrifugal impeller made of aluminum.
- Working at temperature +120°C.
- Drain tray to ensure a controlled drainage.

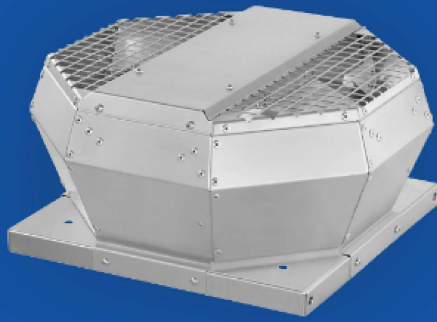
Centrifugal Downblast Fan



DHR

- Efficient IEC standard motor, efficiency class IE3, frequency controllable
- Housing made of weather-resistant aluminum.
- High-efficiency inlet venturi.
- Air down toward the fan base.
- Direct drive backward centrifugal impeller made of aluminum.
- Working at temperature +120°C.
- Drain tray to ensure a controlled drainage.

Centrifugal Upblast Roof Fan



DVS

- Housing made of seawater-resistant aluminum
- Backward curved centrifugal impeller
- Vertical discharge.
- External rotor motors, voltage controllable
- Swing-out fan unit

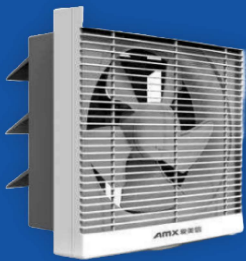
Centrifugal Downblast Roof Fan



DHS

- Housing made of seawater-resistant aluminum
- Backward curved centrifugal impeller
- Horizontal discharge.
- External rotor motors, voltage controllable
- Swing-out fan unit

Domestic Wall Mount Fan



APB

- Frame is made of high-quality durable plastic
- Axial impeller for high air flow and low noise
- Single phase copper coil motor.
- Equipped with PP automatic shutter
- Equipped with PP protection mesh at the inlet side.
- Air flow direction: motor to impeller.

Domestic CEILING Mount Fan



CFP

- Casing is made of high-quality durable plastic.
- Clip-on plastic grille ensures easy mounting and cleaning of the fan.
- The centrifugal forward impeller with high pressure and low noise.
- Single phase efficient motor
- Compatible with ø100 or 150mm air ducts.

SMOKE EXTRACT FAN

Mainly used for the removal of smoke in the event of fire breaking out, which minimizes the suffocation hazard and creates a smoke-free escape route. They can be used in an axial, centrifugal, roof and box model.



AXF F



MPT F



DVR F

Dual-Use 300 ° ,400 °C / 120 min. and 60 °C continuous operation

- Highest efficiency due to CFD-optimized 3D rotor and 3D stator blades
- Suitable for installation in the fire room

MOTOR TECHNOLOGY

- IE3 premium efficiency standard motors in protection class IP55
- Motors have a special shaft sealing, which prevents oil and water from entering over the shaft
- High energy efficiency at full and part load range
- Control with frequency converter in protection class IP66 with
- Fire-Mode function

EC FANS

Falvent produce roof fans, inline fans and wall mount fan with EC motors and so we are extending our product range in this aspect.



- Up to 90% higher efficiency than the conventional motor technology
- Cost savings through reduced energy consumption, very short amortization
- Quiet operation.
- Integrated motor monitoring
- Easy speed control via 0-10V signal
- Easy installation due to simple electrical connection
- Long lifetime through intelligent commutation

ENERGY RECOVERY VENTILATOR



ERV

- Galvanized steel plate, electrostatic plastic spray is optional.
- Efficient solution for supply and exhaust ventilation of enclosed spaces.
- EC motors with low energy demand.
- Supply air purification up to 99 %.
- A remote control is included in the delivery set.
- Operating ambient temperature: -5°C~45°C.
- Easy installation and Compact size.

FALVENT INDUSTRIALS CO.



Al Kharj Road
Riyadh



+966 (0) 114600607



info@falvent.com



www.falvent.com