

# FALVENT

## CENTRIFUGAL BOX FANS

[www.falvent.com](http://www.falvent.com)



FALVENT is a leading manufacture of ventilation solutions for industrial and commercial applications. With a focus on innovation and customer satisfaction, we offer a range of products designed to meet the unique needs of our clients. Our team of experts is dedicated to delivering high-quality products and exceptional service.

# ABOUT OUR CENTRIFUGAL BOX FANS



Falvent assemble and design the finest centrifugal box fans on the market with competitive prices and our team works hard to ensure that you receive the highest quality custom-designed centrifugal box fans, precisely as ordered and delivered on time to meet your project goals.

The range of centrifugal box fan sizes and capacities cover low to medium pressure systems for ventilation as well as for removal and transport of air within practically all environments. Falvent centrifugal box fans obtained the UL Certification which guarantees the compliance of the products with the safety requirements.

Falvent centrifugal box fans tested in accordance with UL-705 standard and certified in ZACT: Power Ventilators category and rigorous tests have been carried out via UL team like temperature test, water spray test, dielectric voltage test and starting current test. Thus, Falvent centrifugal box fans have product safety certification UL logo.

Falvent has met the requirements in ISO 9001, which defines an ISO 9001 Quality Management System (QMS) and obtained the ISO certification accordingly. Falvent centrifugal box fans has CE mark logo where it declared with EEE regulations and meets the requirements of the relevant European product safety legislation.



# CASING

The casing consists of a frame manufactured from profiled steel, 4 double skin panels from galvanized steel with aluminum profile edging and 30 mm mineral wool insulation inside. The fan inlet side is equipped with an inlet cone and a circular connection spigot.

For cleaning and maintenance works the inspection door can be completely removed using the door handle.

The door handle is included loose in the delivery and can be mounted on any side, as desired. The side walls and the cap can be easily removed allowing three possible discharge directions (left, right or up). The internal surface of the casing is completely smooth. The side panels are screwed in the casing frame, so that no screws protrude on the inside of casing.

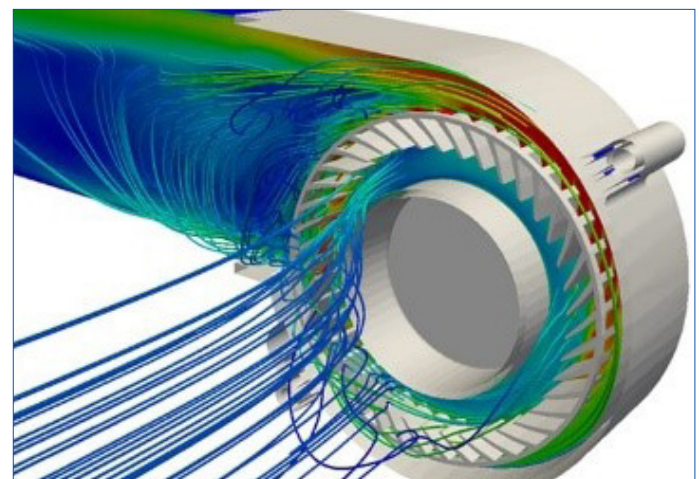
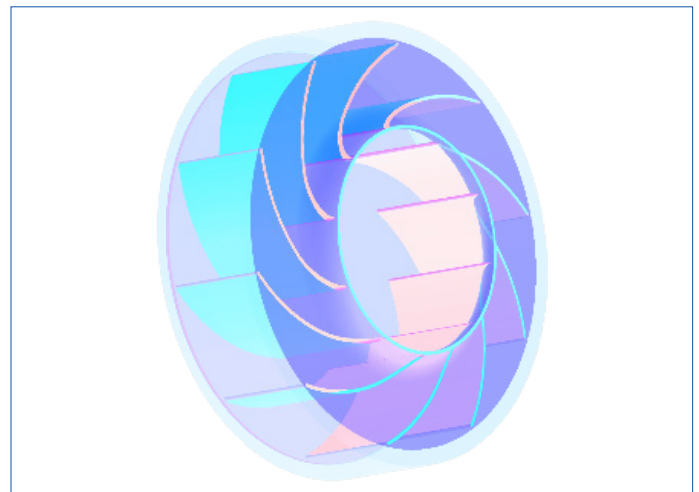
Motor are mounted externally to the air stream enabling the fan to operate at working temperature up and including 120deg c .



# IMPELLER

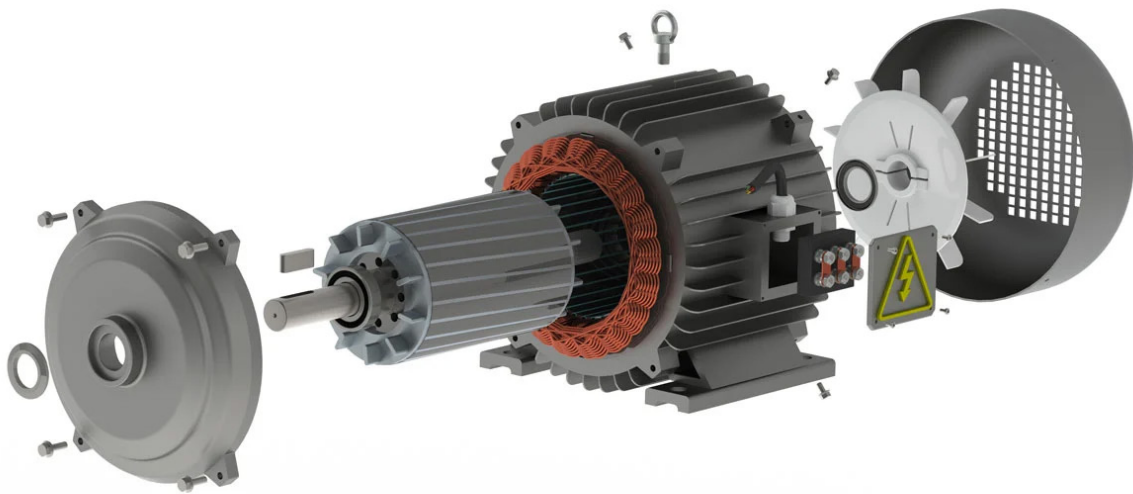
The backward curved strong impeller consists of powder coated steel plate and is mounted on the shaft of three phase motor with a special shaft seal that prevents the ingress of oil and water.

The impeller is dynamically balanced according to the quality class G 6.3 of DIN / ISO 1940. The standard range comprises 13 sizes with impeller diameters from 225 to 1000 mm and optimized design through CFD simulation and actual testing.



# MOTOR

All motors three Phase asynchronous motor, WEG brand, UL certified, IEC standard motors in IE3, with lower acquisition cost and high technology, easy installation, easy operation and low maintenance cost and suitable for the use with Frequency Inverters. Motors are foot mounted, totally enclosed type to IP55 with a standard industrial paint finish and Class F insulation, TEFC cooling method and wired via a weatherproofed cable

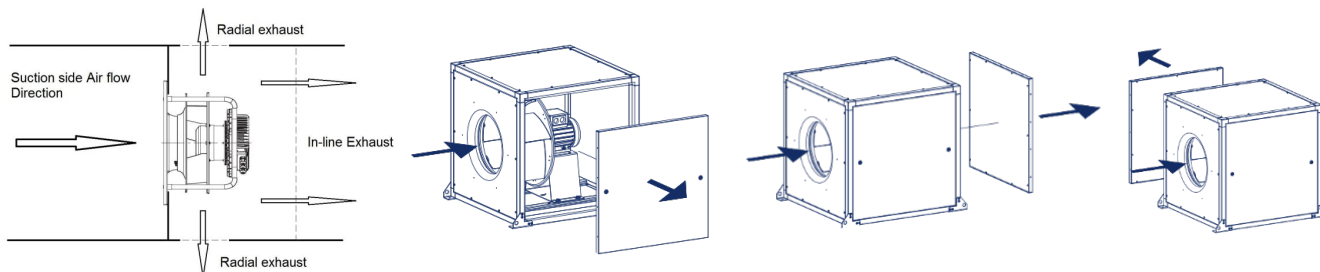


Motors are provided with Thermistor (PTC) with the resistance increasing drastically to a well-defined temperature figure. This sudden resistance variation blocks the PTC current, causing the output relay to operate, and the main circuit to switch-off. Motors are fitted with highest quality bearing selected and designed to ensure the long life time of the motors.

**Electrical supply: 380-400V/60Hz/3Ph.**

# AIR FLOW DIRECTION

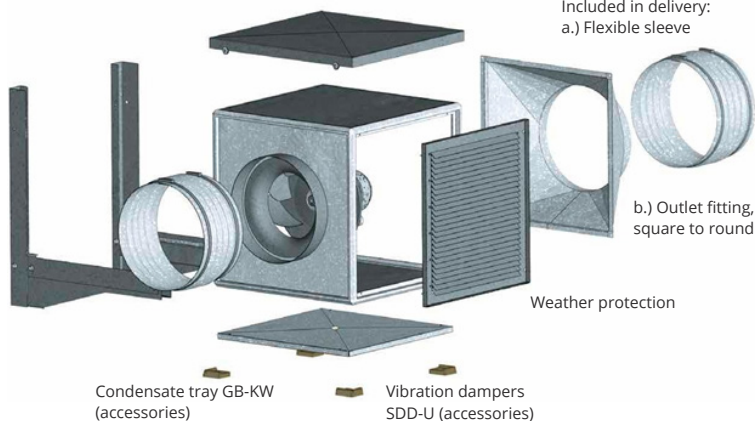
The fan outlet panel, which can easily be changed at site from straight through air direction to top or side outlet, as the air passes through the fan it turns through an angle of 90o and is exhausted radially. This airflow pattern provides the option of positioning the exhaust duct in a radial or in-line position.



Wall bracket GB-WK (accessories)

Weather protection cover GB-WSD (accessories)

Included in delivery:  
a.) Flexible sleeve



Condensate tray GB-KW (accessories)

Vibration dampers SDD-U (accessories)

## ACCESSORIES

### 1. Included in delivery:

- a.) Flexible sleeve
- b.) Outlet fitting, square to round

### Weather protection

- 2. Vibration dampers SDD-U (accessories)
- 3. Condensate tray GB-KW (accessories)
- 4. Wall bracket GB-WK (accessories)
- 5. Weather protection cover GB-WSD (accessories)

## PRODUCT CODE

( MPT 630 D4 2.2 )

➤ MPT: denotes fan type

➤ 630: denotes impeller diameter in millimeters

➤ D: denotes 3 ph motor.

➤ 4: denotes a nominal 4 pole speed

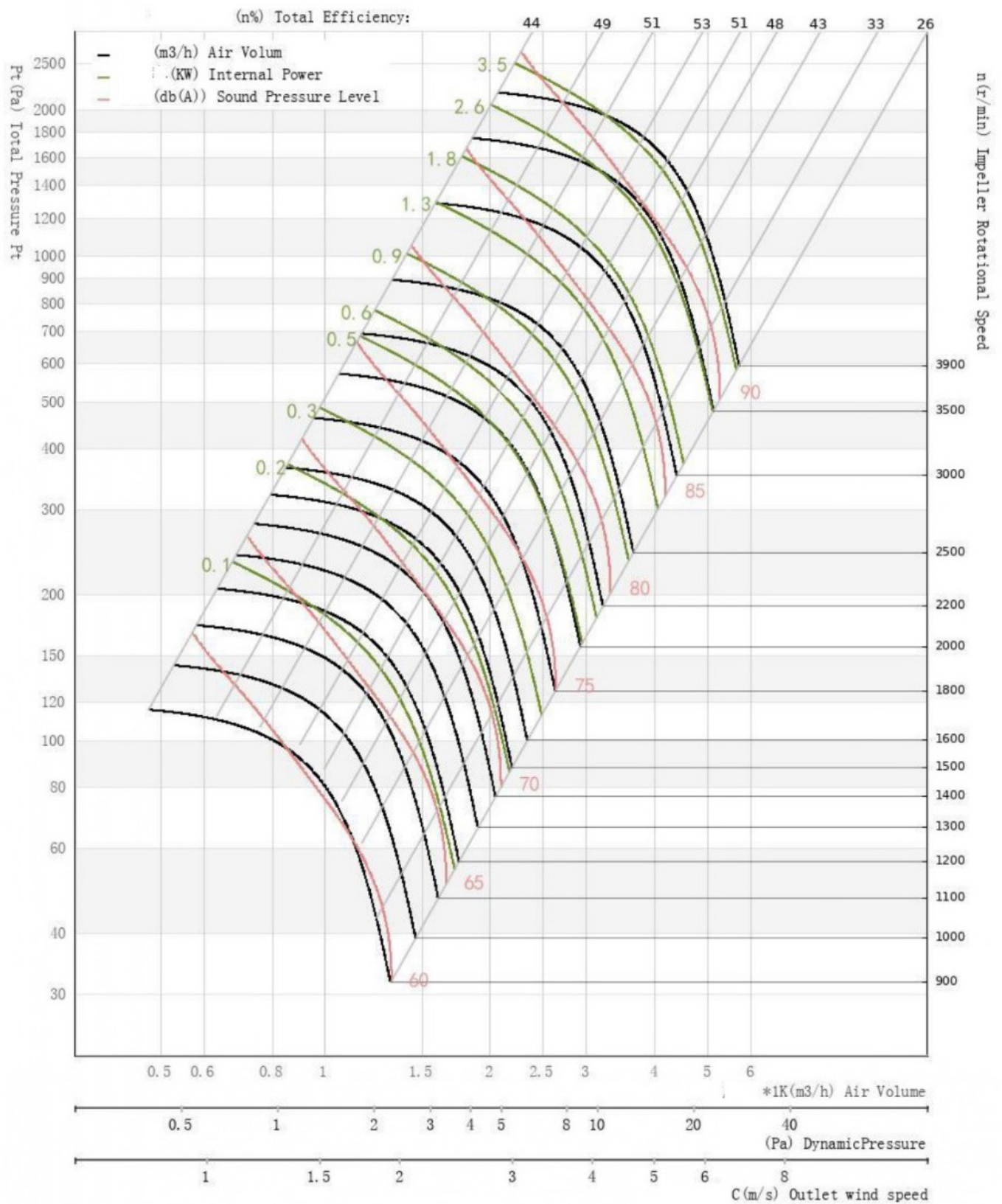
➤ 2.2: denotes the motor power in kw.

# TECHNICAL CHARACTERISTICS

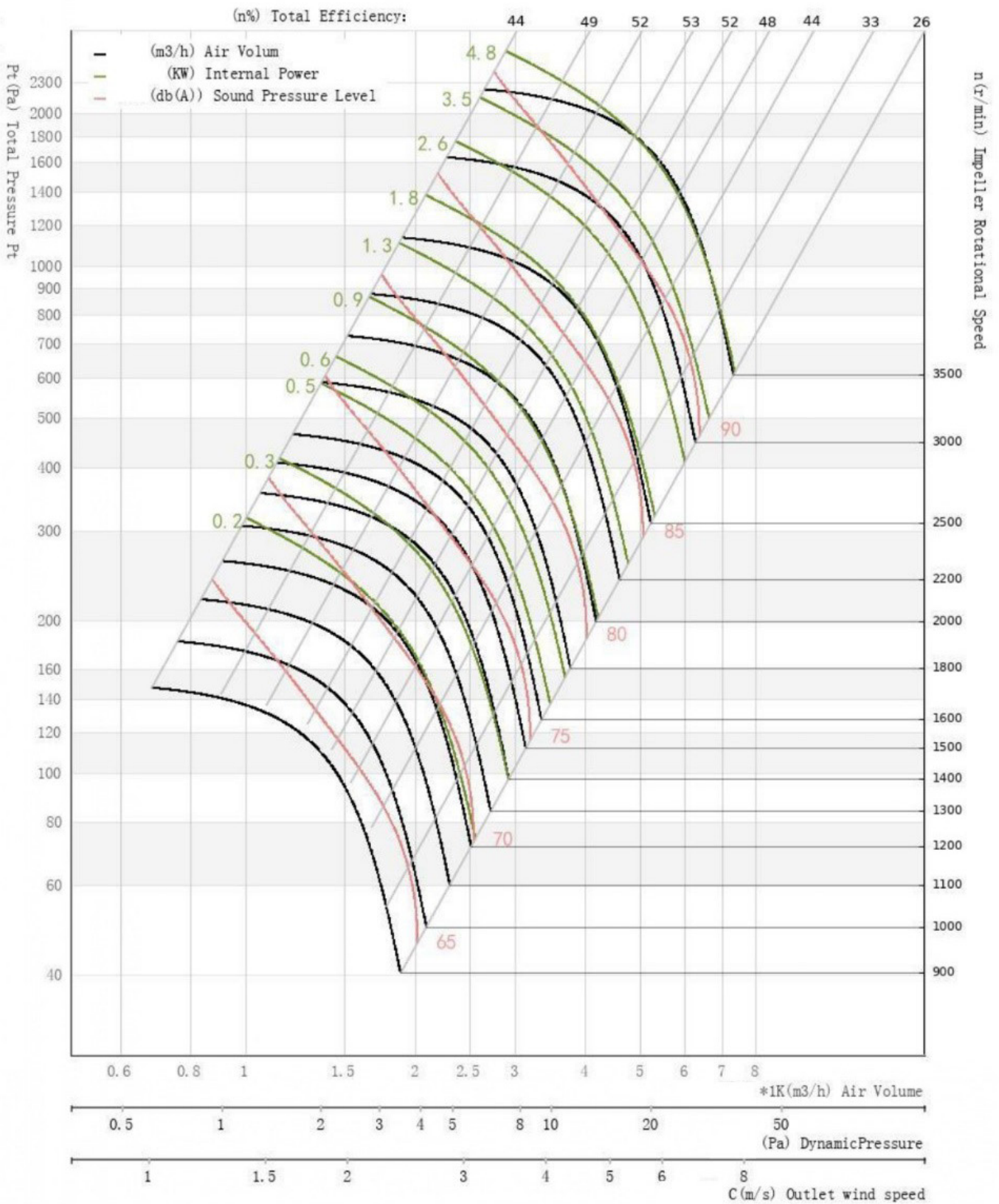
Model No.	Impeller Dia	Max Air Flow		P.out	Full Load Ampere	Voltag	Frequency	Phase	Speed	Noise Level
	mm	hr/m3	s/m3	(Kw)	(A)	(V)	(Hz)		rpm	db
MPT 315 D2 1.1	315	3250	0.9	1.1	1.26	380	60	3	3360	346805
MPT 315 D4 0.25	315	1550	0.43	0.25	0.739	380	60	3	1740	346806
MPT 355 D2 2.2	355	5880	1.63	1.1	2.33	380	60	3	3360	346808
MPT 355 D4 0.37	355	3100	0.86	0.37	1.23	380	60	3	1740	346809
MPT 400 D2 4	400	8600	2.39	4	3.09	380	60	3	3450	346810
MPT 400 D4 0.75	400	5150	1.43	0.75	1.71	380	60	3	1740	346811
MPT 450 D2 2.2	450	12750	3.54	2.2	4.45	380	60	3	3450	346812
MPT 450 D4 0.55	450	7100	1.97	0.55	1.23	380	60	3	1720	346813
MPT 500 D4 1.1	500	10400	2.89	1.1	1.68	380	60	3	1730	346815
MPT 560 D4 1.5	560	15300	4.25	1.5	3.15	380	60	3	1730	346817
MPT 630 D4 4.0	630	22100	6.14	4	4.72	380	60	3	1740	346818
MPT 630 D4 5.5	630	25400	7.06	5.5	6.98	380	60	3	1740	346819
MPT 710 D4 7.5	710	29400	8.17	7.5	6.98	380	60	3	1740	346821
MPT 710 D4 11.0	710	32600	9.06	11	8.03	380	60	3	1740	346822
MPT 800 D6 5.5	800	37450	10.4	5.5	10.4	380	60	3	1150	346825
MPT 900 D6 11.0	900	41500	11.53	11	8.99	380	60	3	1150	346828
MPT 1000 D4 15.0	1000	71850	19.96	15	28.7	380	60	3	1150	346829

# PERFORMANCE CURVES

## MPT 315

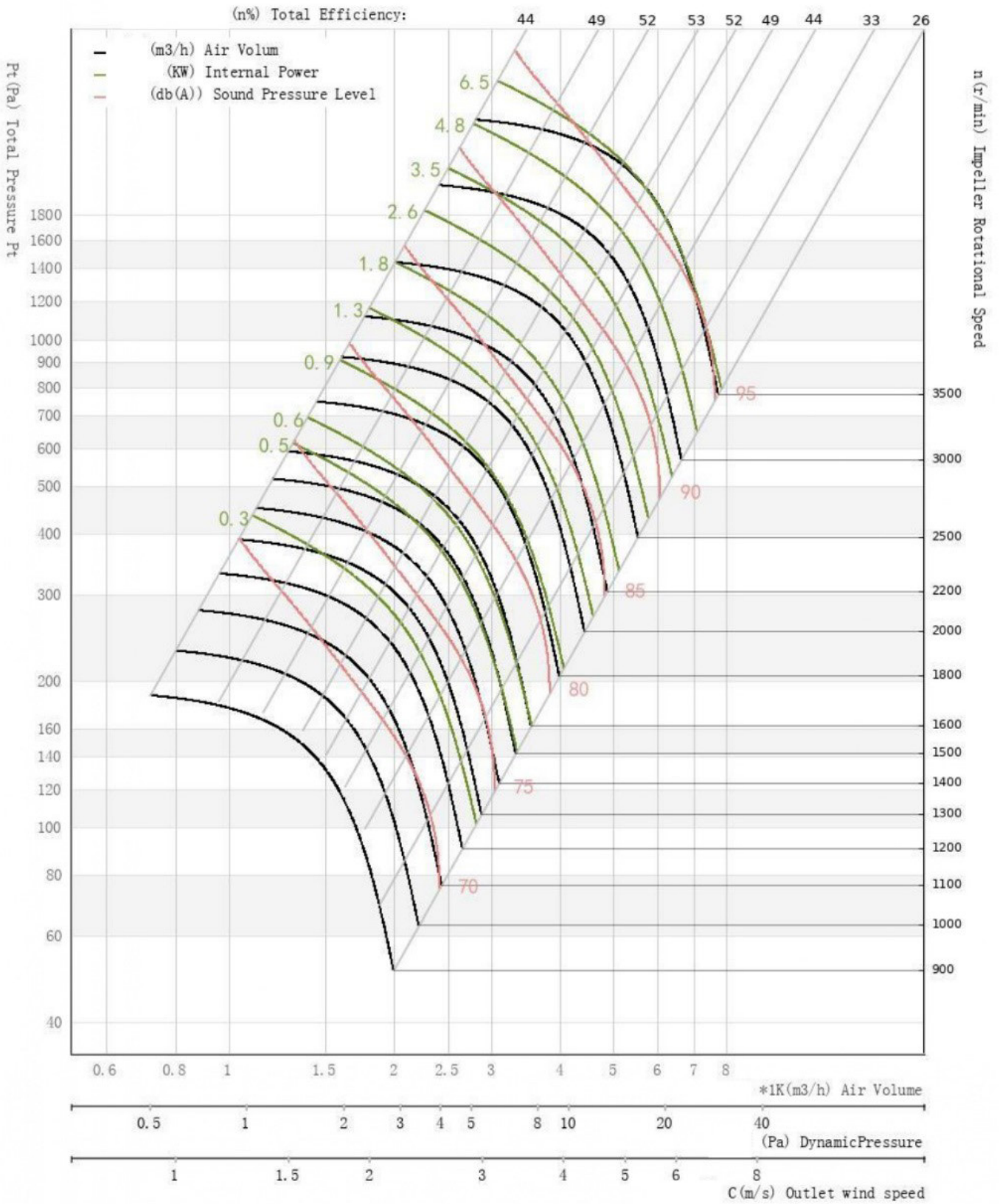


# MPT 355

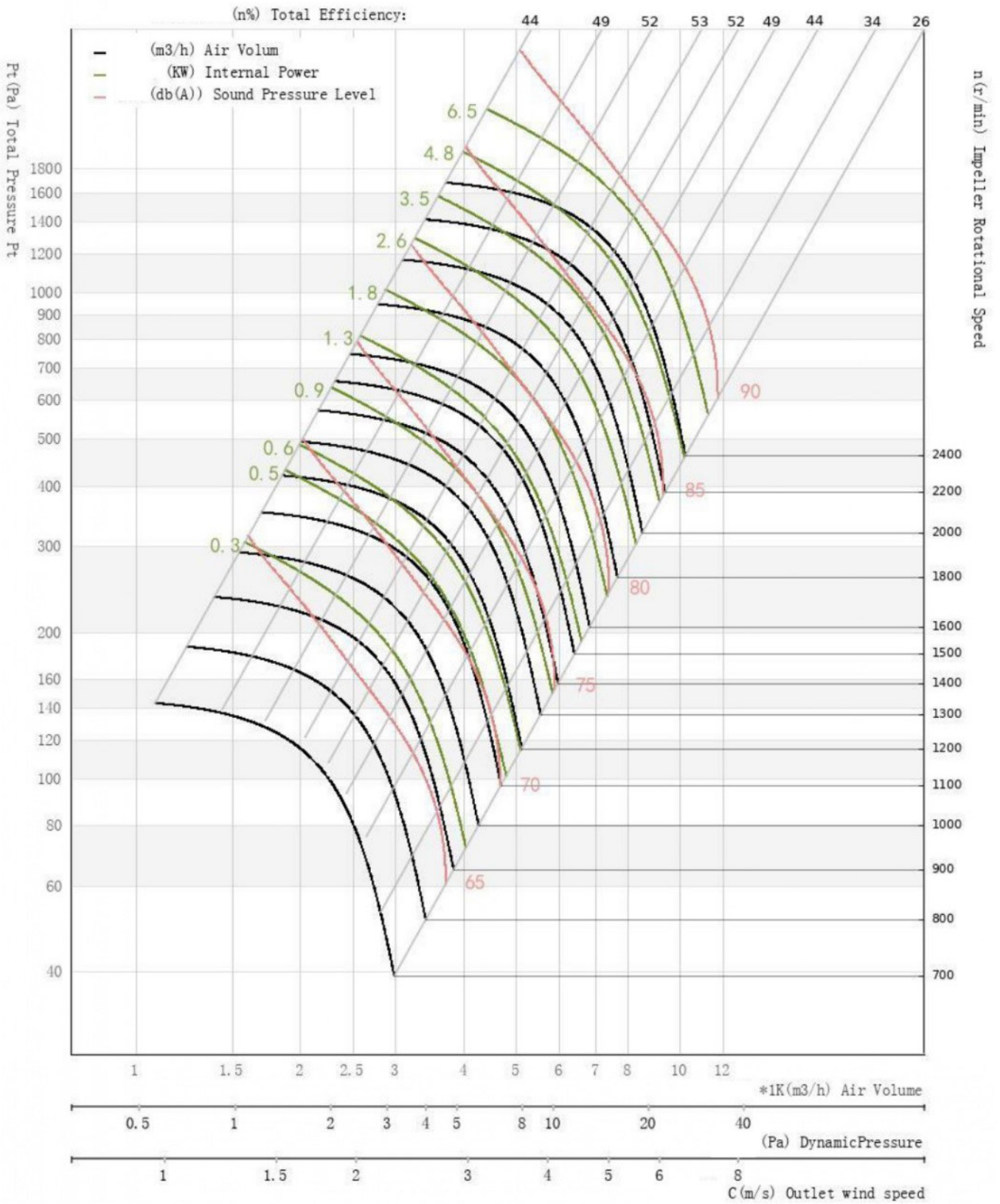




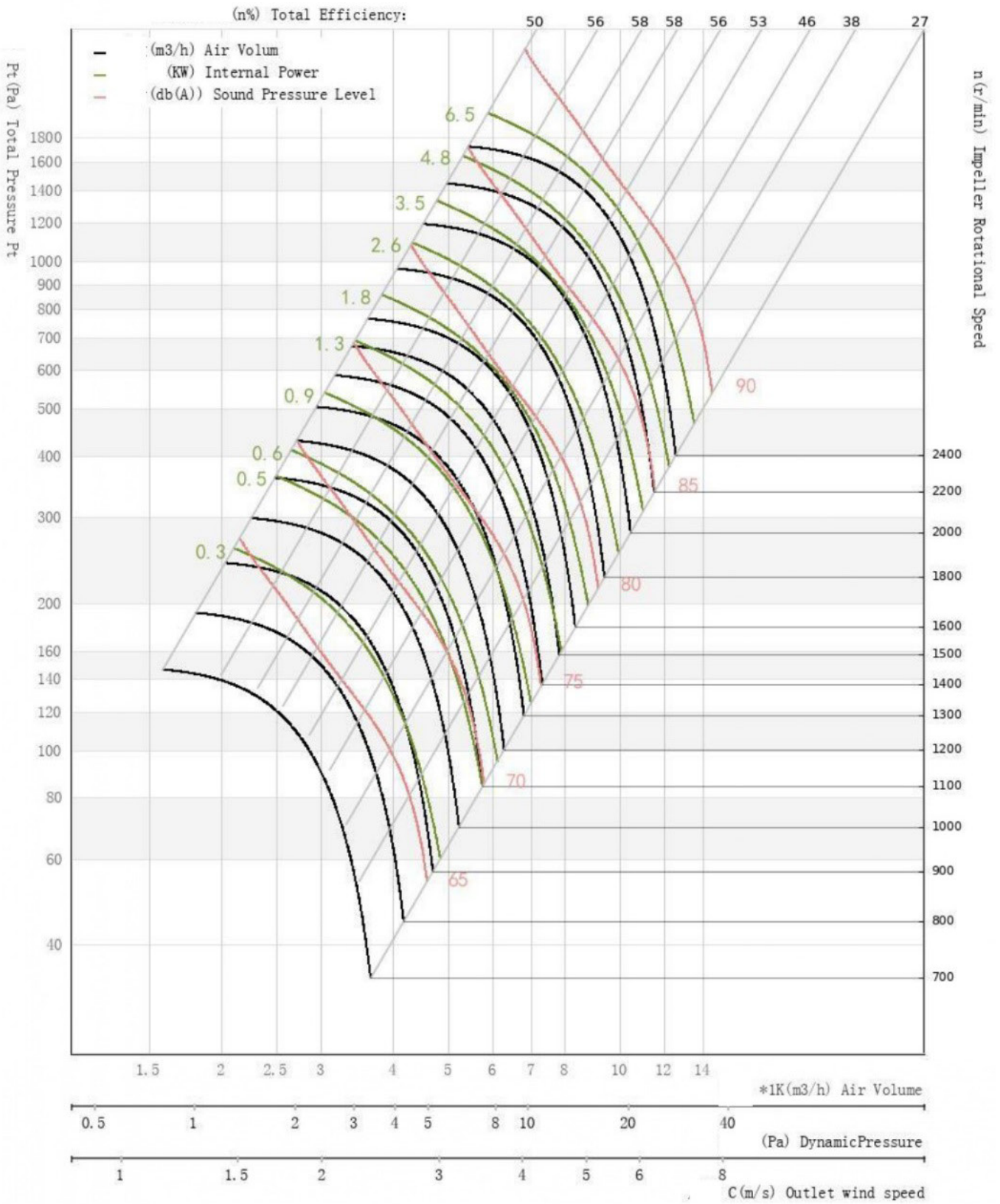
# MPT 400



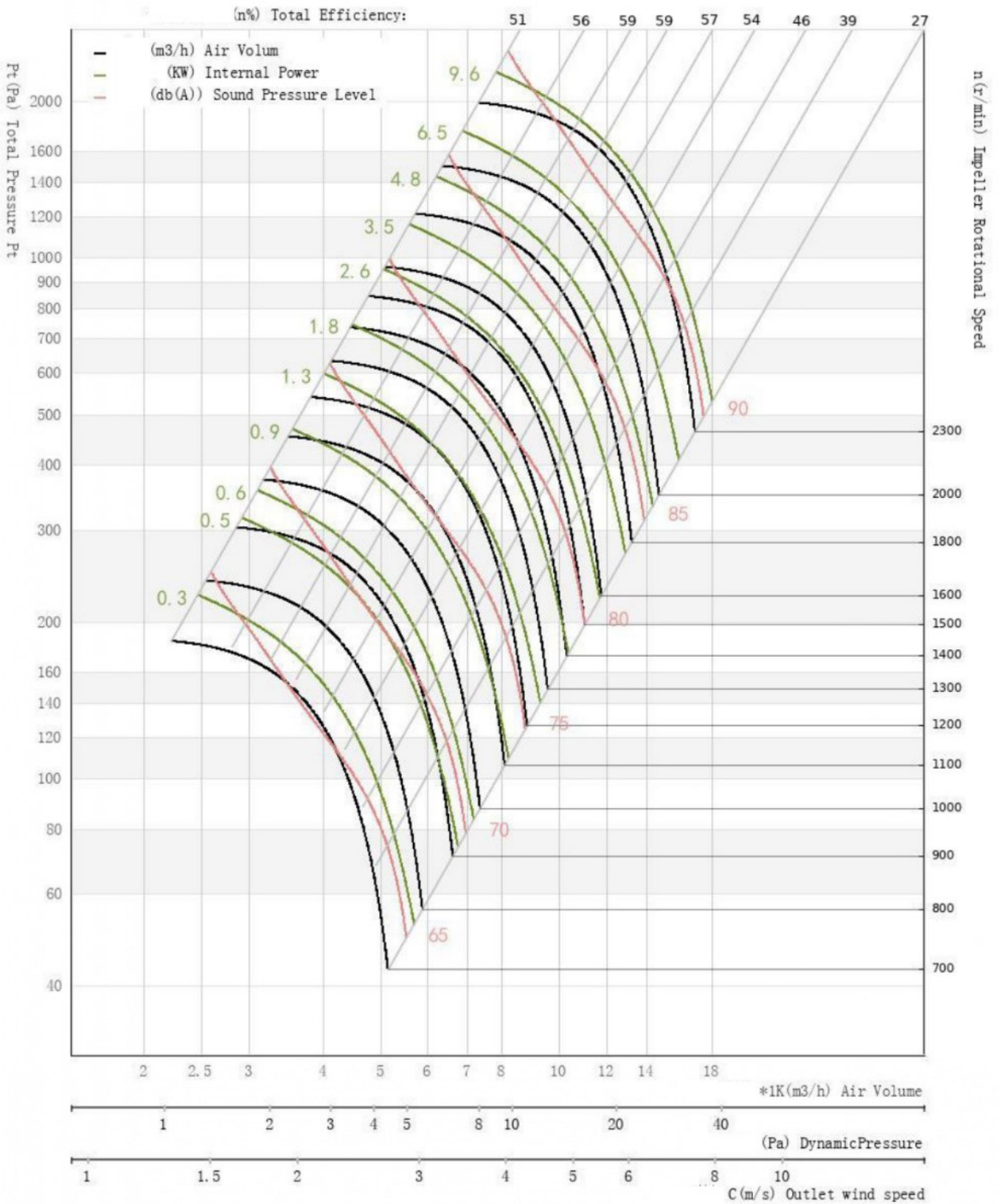
# MPT 450



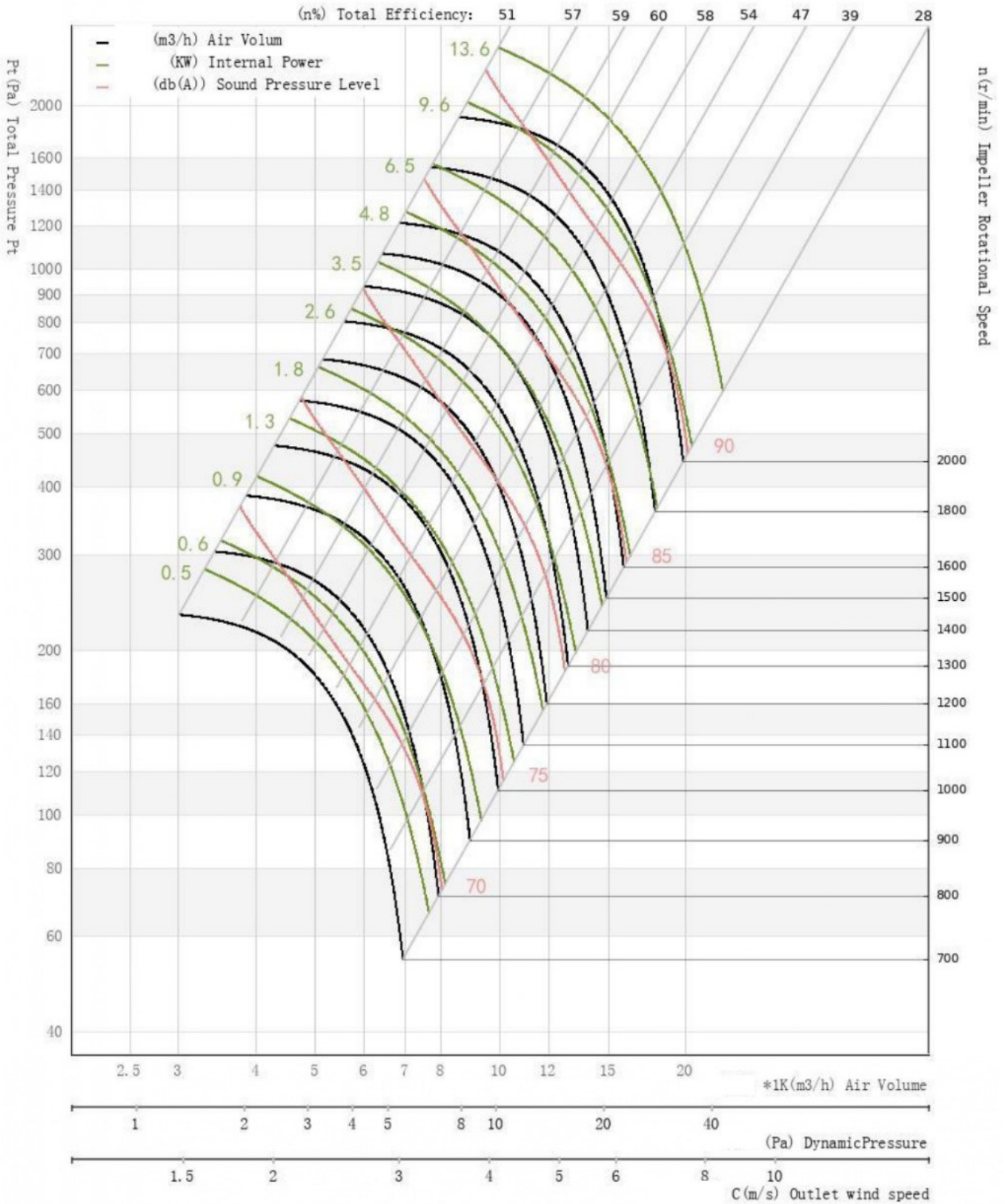
# MPT 500



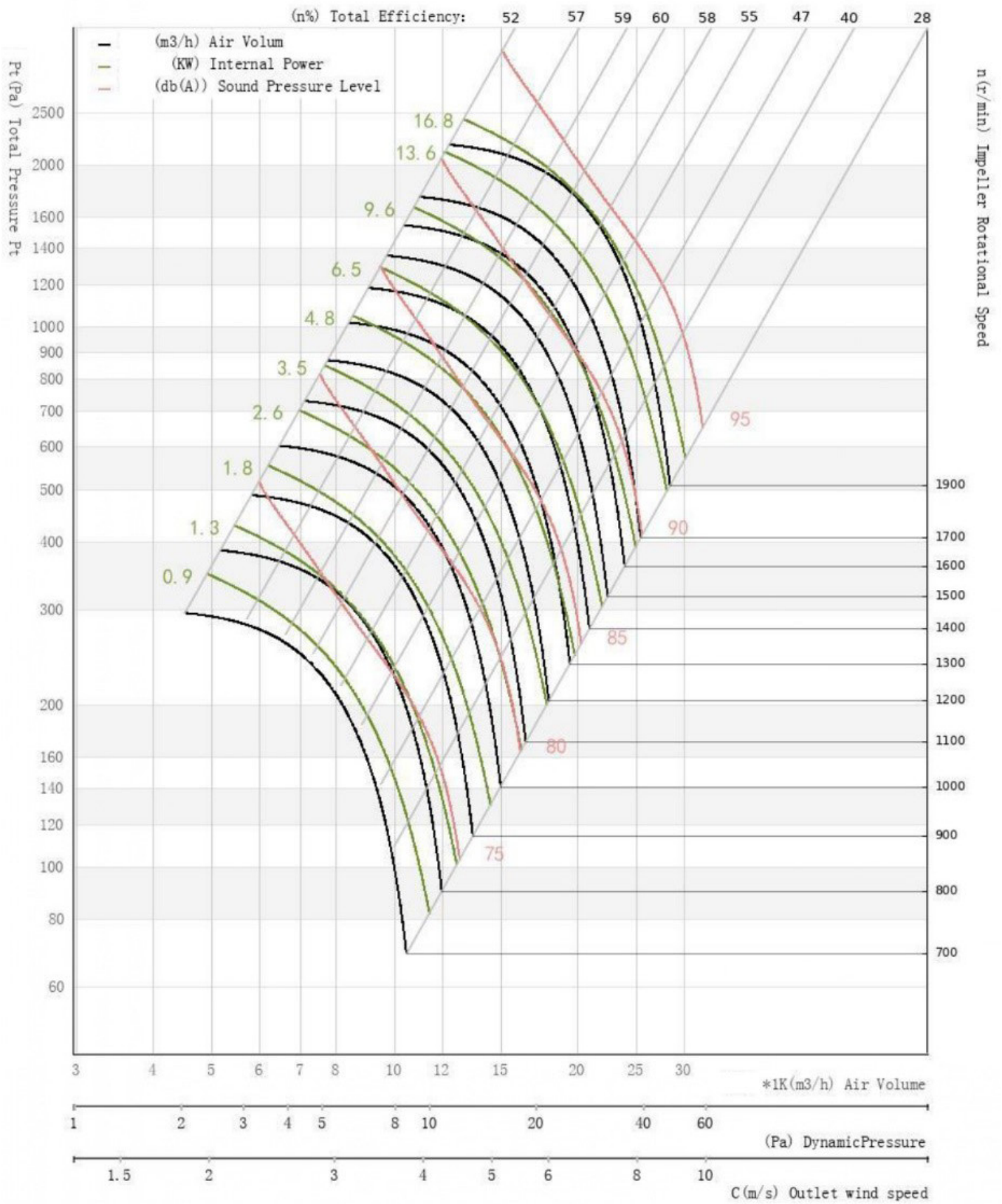
# MPT 560



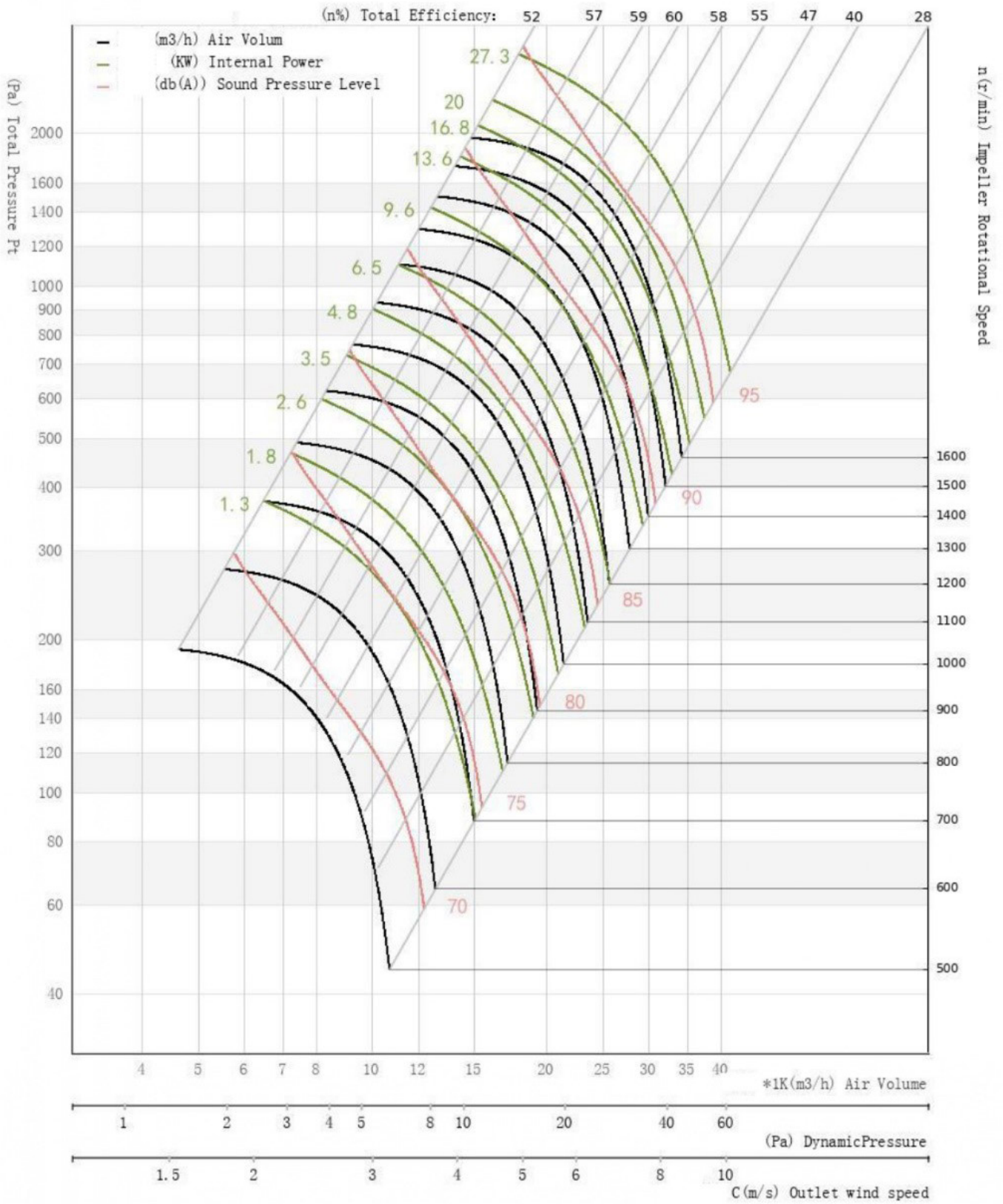
# MPT 630



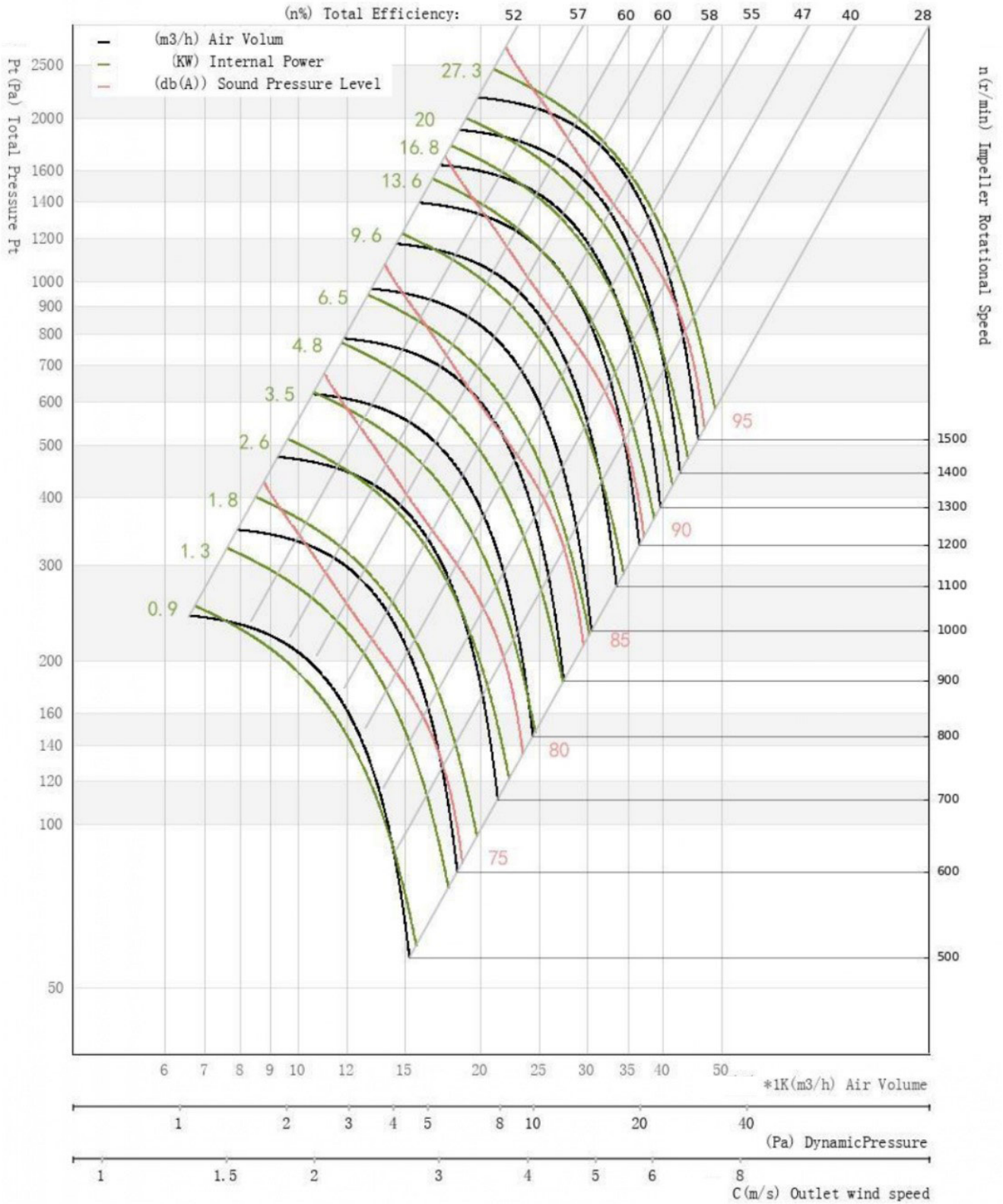
# MPT 710



# MPT 800

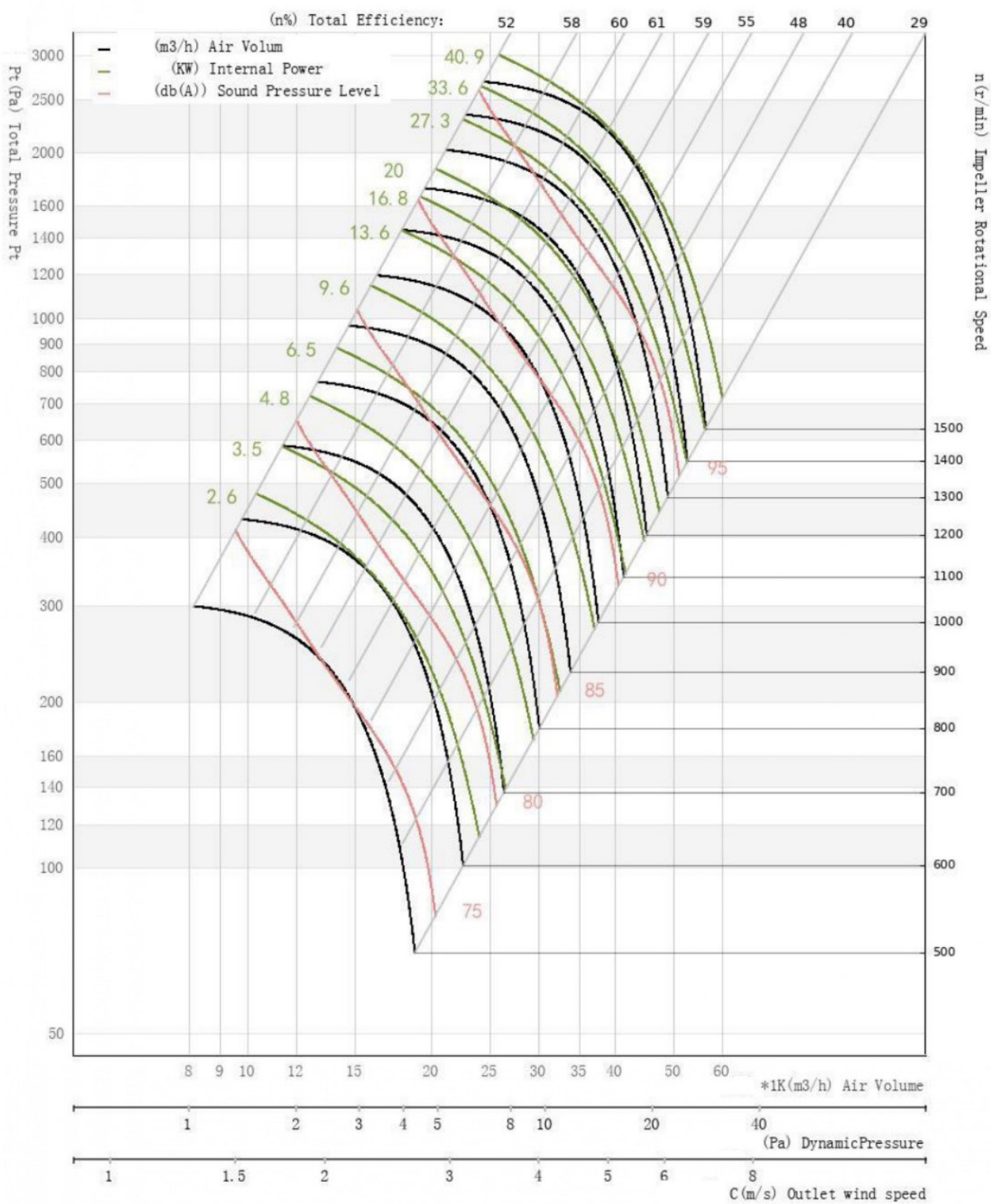


# MPT 900



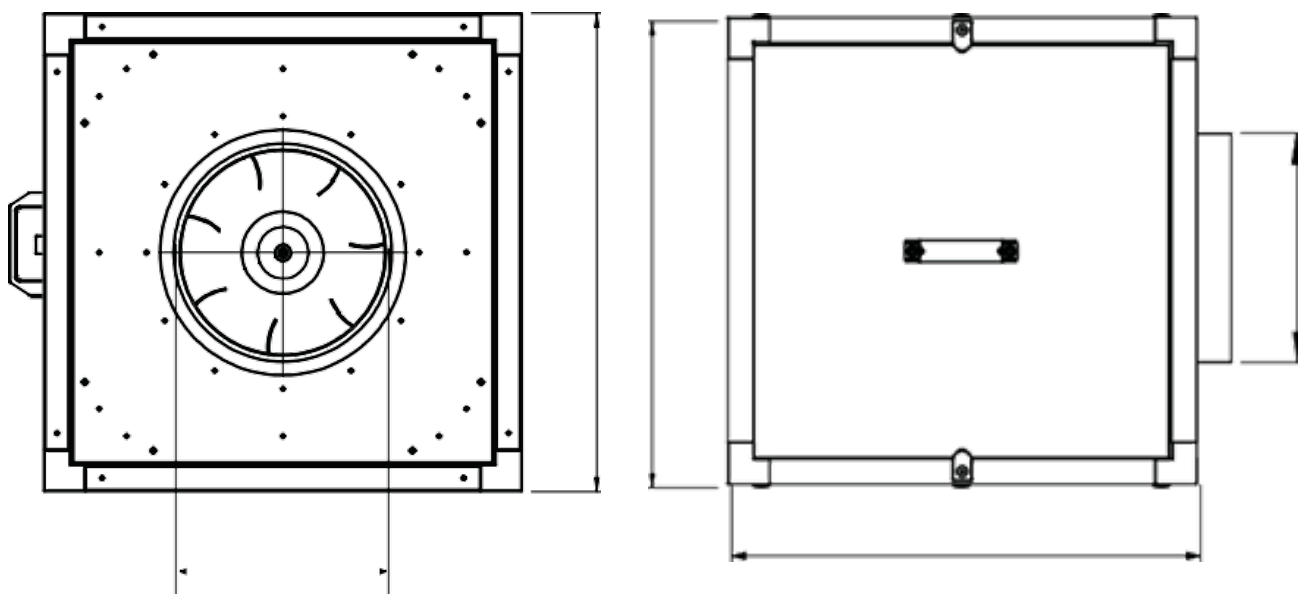


# MPT 1000



# DIAMENSION DATA

## DIAMENSION DATA



All dimensions are mm.

MODEL	A	B	C	D	E
MPT 315	315	500	500	500	300
MPT 355	355	700	700	700	300
MPT 400	400	700	700	700	350
MPT 450	450	700	700	700	400
MPT 500	500	700	700	700	450
MPT 560	560	900	900	900	500
MPT 630	630	900	900	900	600
MPT 710	710	1200	1200	1200	650
MPT 800	800	1200	1200	1200	700
MPT 900	1000	1400	1400	1400	750
MPT 1000	1000	1400	1400	1400	750



### NAME PLATE

Permanent metal nameplate should have clearly identifiable fan number, model number and product serial number (i.e., unique identification for each fan).



### ACCEPTANCE INSPECTION

Before delivery, Falvent ensures that each and every fan undergoes a test run and final inspection.



### SAFETY

Falvent supply all our tube axial fans with UI & CE marking, which confirms that Falvent products conform to the American & European Machinery Directive and come with the corresponding documentation.



### GUARANTEE

Falvent offers a guarantee of 24 months following installation for all fans.



### A PARTNERSHIP FOR QUALITY

For most of our customers, purchasing a fan is not just a one-off event, but rather the beginning of a supply relationship that goes on for decades.



[www.falvent.com](http://www.falvent.com)



# CENTRIFUGAL BOX FAN

## CONTACT US

---

 Al Kharj Industrial City - Riyadh  
- Saudi Arabia

 +966114600607

 [info@falvent.com](mailto:info@falvent.com)